

# *Modern Royal Dux Chess Set*

*This set was designed in the 1960's in the Royal Dux Porcelain Manufacture but was not produced for very long. We are proud to exclusively reintroduce this set to chess collectors world wide as we believe this beautiful set should not be missing in any collection.*

*The set has fairly simple but harmonious design and uses only white, matt black and matt gold finishes.*

*The king stands 10,5cm (4.1") tall, the pawn is 5cm (2"). The bases are approximately 4cm(1.6") in diameter. The set is supplied either in a paper shipping box, or in a wooden gift box with mirrored chess board 40x40cm (15.7"x15.7").*



# *Modern Royal Dux Chess Set*



# *Modern Royal Dux Chess Set*



# *Modern Royal Dux Chess Set*



*King 10,5cm (4.1")*



*Queen 9,5cm (3.7")*



*Bishop 7,5cm (3.0")*



*Knight 7,5cm (3.0")*

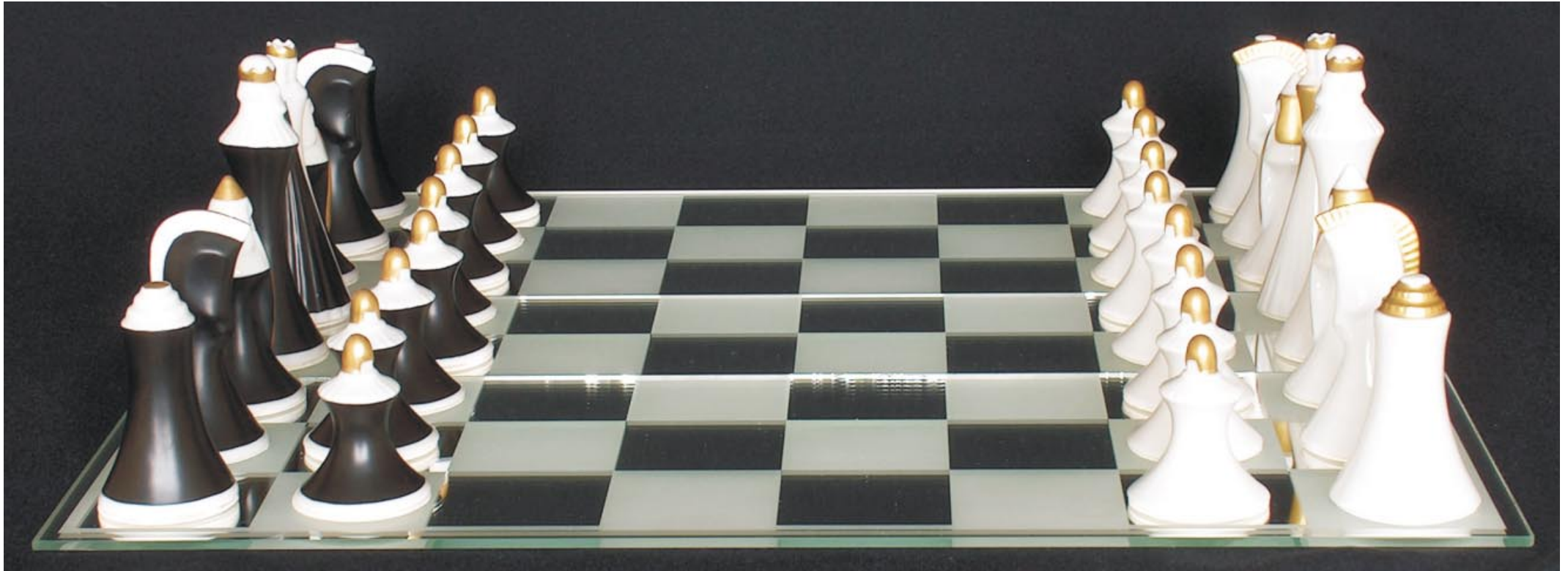


*Rook 6,5cm (2.6")*



*Pawn 5,0cm (2.0")*

# *Modern Royal Dux Chess Set*



*To order this beautiful chess set, please contact Jan Starka at [jstarka@2es.cz](mailto:jstarka@2es.cz)*